

Price
3 500 zł
60 zł/m²

MINT Property is pleased to present a new, never inhabited apartment at Paderewskiego Street in Rzeszów, an investment of Paderewski Park.

The apartment with an area of 59 m² consists of two bedrooms, a living room with a kitchenette, a bathroom and a hall. The apartment includes two balconies, a storage room and a parking space in the underground garage.

Lokalizacja:

Around the complete service and commercial infrastructure, green areas, a park, grocery stores, the proximity of public transport stops ensures efficient access to every part of Rzeszów.

Cena:

The costs related to the maintenance of the apartment are administrative rent PLN 800 + electricity

The rental price is 3 500 PLN + 200 PLN parking space in the garage.

We look forward to working with you!

Dane agenta:

Szymon Kamiński

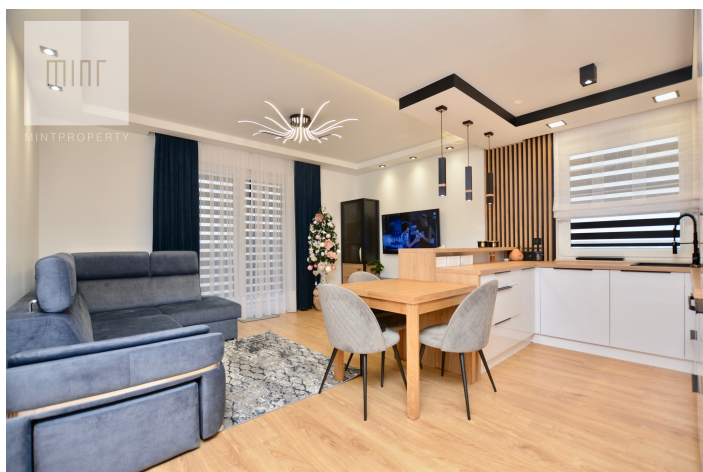


794143794





szymon.kaminski@mintproperty.pl

 **RZESZÓW**
Paderewskiego



Size	Rooms	Bedrooms	Bathrooms	Floor
58.00 m ²	3	2	1	9

Dodatkowe udogodnienia:

-  Lift
-  Balcony