

Commercial property for rent

Price
42 000 zł
 30 zł/m²

MINT Property is pleased to present to you a **1400 m2** commercial building in Rzeszów. The hall is equipped with an overhead crane (lifting capacity 5t). The height of the hall is 8 m. The property is conveniently located in terms of communication junctions with easy access to the S19 road and the A4 motorway. The property includes a large maneuvering area for trucks and an unloading ramp.

The facility is perfect for:

- warehouse hall
- production hall
- assembly hall

The property has its own transformer stations with unlimited connection capacity. Additionally, the hall is equipped with a sudnica and three goods lifts. It is possible to rent office space.

Cena:

Cena najmu : **35 000 zł netto** + electric current

Cena najmu powierzchni biurowej **25 zł/m2 netto** (powierzchnie od 50 m2 - 500 m2)

Dane agenta:

Szymon Kamiński

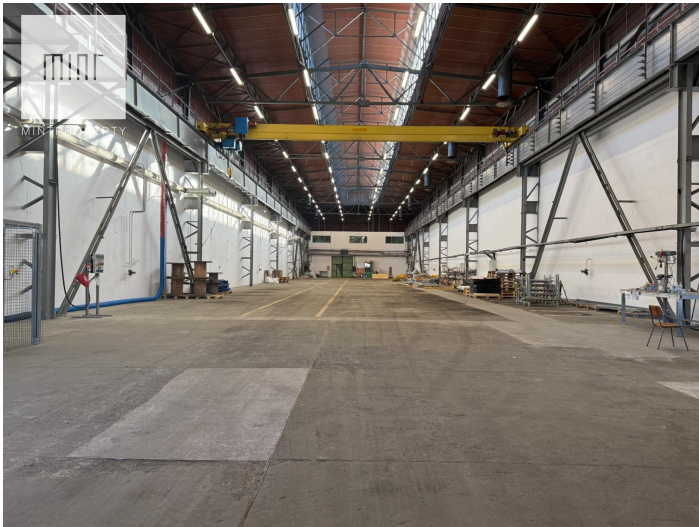


794143794





szymon.kaminski@mintproperty.pl

 **RZESZÓW**
Boya Żeleńskiego



Size	Rooms	Bedrooms	Bathrooms	Floor
1400.00 m ²	1	0	0	0

Dodatkowe udogodnienia:

-  Lift
-  Security