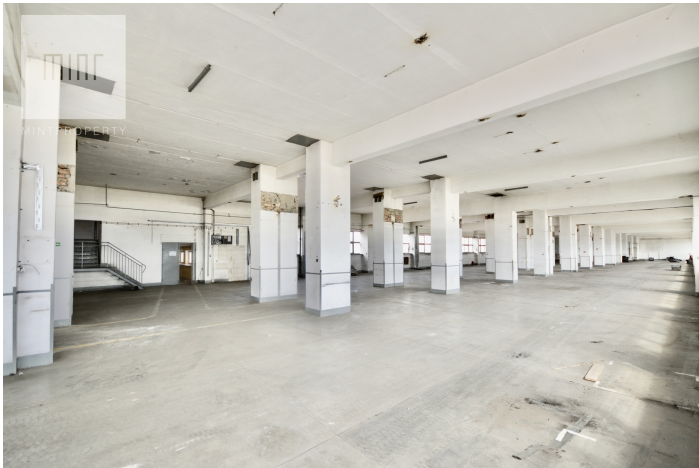


Commercial property for rent

Price
25 000 zł
25 zł/m²

 **RZESZÓW**
Boya Żeleńskiego



MINT Property is pleased to present to you a **1700 m2** commercial building in Rzeszów. The property is conveniently located in terms of communication junctions with easy access to the S19 road and the A4 motorway. The property includes a large maneuvering area for trucks and an unloading ramp.

The facility is perfect for:

- warehouse hall
- production hall
- assembly hall

The property has its own transformer stations with unlimited connection capacity. Additionally, the hall is equipped with three goods lifts. There is a possibility of renting an office space.

Cena:

Rent: **PLN 25,000 net** electric current

Office space rental price **PLN 25 / m2 net** (areas from 50 m2 - 500 m2)

It is possible to sublet a part of the space.

Dane agenta:

Szymon Kamiński



794143794



szymon.kaminski@mintproperty.pl

Size	Rooms	Bedrooms	Bathrooms	Floor
1000.00 m ²	1	0	0	1