

Price
1 800 zł
42 zł/m²

MINT Property is pleased to present you a new, never inhabited apartment at Witolda Street, the Witold Park investment in Rzeszów.

The property with an area of 43 m² is located on the 15th floor with a panoramic view of the city, it consists of a living room with a kitchenette, two independent bedrooms, a bathroom and a hall. The apartment includes a balcony with an area of 9 m² and a parking space in the underground garage. Heating and water from the MPEC network, the apartment is sunny from the south.

The apartment is fully furnished and equipped with rtv / household appliances

Around the complete service and commercial infrastructure, a park, green areas, MPK stops, a shopping mall, convenient access to the center of Rzeszów, as well as motorways.

The cost of maintaining the property is PLN 300 + electricity. Rent: PLN 2,100

Parking space in the underground garage included in the rental price!

Agent leading the offer: Mateusz Piziurny

We invite you to cooperate with our office!

Dane agenta:

Mateusz Piziurny

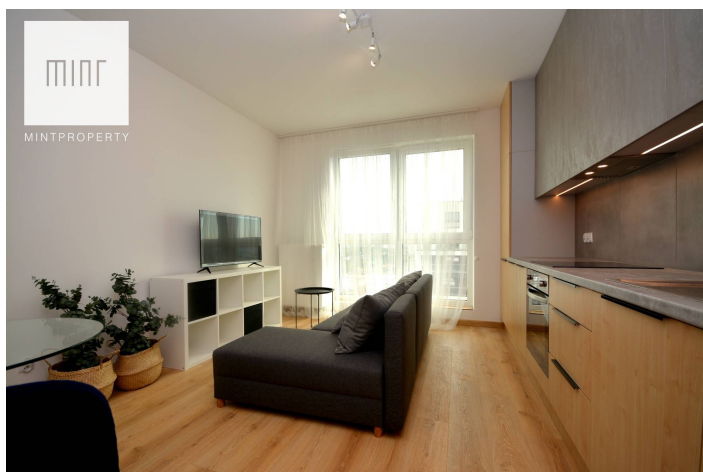


533325225






mateusz@mintproperty.pl

 **RZESZÓW**
Witolda



Size	Rooms	Bedrooms	Bathrooms	Floor
43.00 m ²	3	2	1	15

Dodatkowe udogodnienia:

-  Lift
-  Balcony
-  Parking