

WISLANE TARASY | HIGH STANDARD | 58m²

Price
2 500 zł
43 zł/m²

Mint Property is pleased to present a beautiful two-room apartment for rent in a prestigious location - just off the Grzegórzeckie Roundabout.

Vistula Terraces is a modern investment, consisting of 6 multi-family buildings, providing the ideal balance of a residential zone with a natural green zone. The investment is characterized by a great location, high quality of workmanship and attractive and functional layouts of apartments. The area where the property is located is closed, monitored and guarded.

The apartment with an area of 58 m² is located on the 3rd floor of a six-storey building from 2014. The apartment is decorated very functional, has a spacious living room, a fully furnished kitchenette, a cozy bedroom, a bright bathroom and a hall. An additional advantage of the property is a spacious balcony, to which the door leads from the living room.

Price: PLN 2,500 + administration fee in the amount of PLN 500 (includes heating, water, maintenance of common areas, garbage collection and protection) + electricity

Deposit in the amount of 1-month rent.

One time fee for a real estate office.

We invite you to contact us and for the presentation of the property.

Dane agenta:

Dorota Kamińska

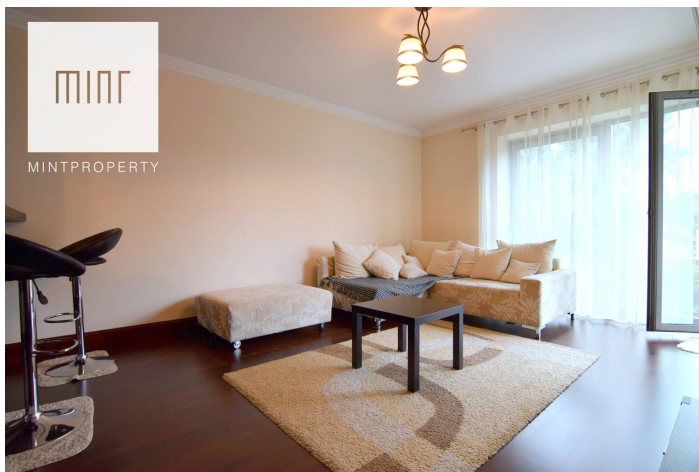


505452950







dorota@mintproperty.pl

 **KRAKÓW**
Grzegórzecka



Size	Rooms	Bedrooms	Bathrooms	Floor
58.00 m ²	2	1	1	3

Dodatkowe udogodnienia:

-  Lift
-  Balcony
-  Parking
-  Security